

SAGE

Calvice

The Journal of The System Administrators Guild of Australia

ISSN: 1447-5049

Volume 8 Number 4

Summer 2002 Edition

This Issue

An Interview with Tim Leatherman

Looking for a Christmas present for the sysadmin in your life? - Try SAGE-AU Merchandise!

Membership Drive - win a \$220 gift voucher

Welcome back Rockhampton

SAGE-AU

The System Administrators Guild of Australia

<http://www.sage-au.org.au>

Contents

Executive

President's Report 3

Regional Groups

Welcome back to the Rockhampton RG 10
 NSW RG 2002 Report 10
 Regional Group contact information 11

Articles

An Interview with Tim Leatherman 5
Andrew van der Stock

Membership Information

SAGE-AU Merchandise 6
 Membership Drive 8
 Bulk Memberships 9

Advertising Rates (all prices are G.S.T. inclusive)

Inclusions with SAGE Advice

Slim Booklet or CD inclusion \$660
 (if more than slim booklet, \$poa)
 Single page inclusion \$385

Normal Rates

Full page, 170 x 250 mm \$275
 1/2 page, 170 x 120 mm \$165
 1/4 page, 170 x 55 mm \$88
 1/8 page, 80 x 55 mm \$44

Classified space

\$10 per ad, no more than 50 words

Bulk Rates

Ad space in four or more issues paid in advance attract a 20% discount.

The publication schedule for 2003 can be found at:
www.sage-au.org.au/newsletters_advert.html

Information

SAGE Advice is the official newsletter of the System Administrators Guild of Australia. It is produced four times per year and distributed free of charge to members of SAGE-AU via Australia Post. Online archived copies are available for members at www.sage-au.org.au/newsletters_index.html.

Editor

Andrew Whyte
editor@sage-au.org.au

Membership Information

Lee Monette
lee@sage-au.org.au

Contact Details

Contact details for SAGE-AU are:
 SAGE-AU
 346/500 Centre Road
 Bentleigh VIC 3204
 Phone: (03) 9822 7271
 Fax: (03) 9822 0260

Internet Server

<http://www.sage-au.org.au/>

SAGE-AU Committee

President

Andrew Hennell
andrew.hennell@member.sage-au.org.au

Vice President

Andrew Whyte
andrew.whyte@member.sage-au.org.au

Secretary

Simon Woodhead
simon.woodhead@member.sage-au.org.au

Treasurer

Steven Plunkett
steven.plunkett@member.sage-au.org.au

General Committee

Simon Coggins
simon.coggins@member.sage-au.org.au

Rohan Durrant

rohan.durrant@member.sage-au.org.au

Phil Kernick

phil.kernick@member.sage-au.org.au

Brad Marshall

brad.marshall@member.sage-au.org.au

Associate Representative

Tim Oaks

timothy.oaks@member.sage-au.org.au

President's Report

Andrew Hennell

(president@sage-au.org.au)

Another year is about to pass us by, and it's about that time of year that we all reflect on what we've done, and where we're going.

The past 12 months have seen a great increase in SAGE-AU activity – the Melbourne conference was our biggest yet, Lee is now full time, we have new mailing lists, greater representation to government agencies, and a higher profile within the media - and the list goes on and on.

Sadly, on a wider scale it's not all rosy. Globally, there's the continual threat of war against Iraq and ongoing conflict in the Middle East and around the world. Closer to home we're still dealing with the ravages of drought on rural communities, and a slowdown in the IT industry sees many of our colleagues having difficulty in finding work. As I write this I'm still catching up from 4 days of firefighting around Sydney, with possibly worse to come over summer, and there is always the ongoing problem of homelessness and poverty.

I believe that Christmas time is about family and community, giving and receiving, sharing and thinking of others.

Each year at the conference Trivia night we raise funds to help the underprivileged in the host city. Perhaps this Christmas you would consider giving a small donation to a local charity – money, tinned food, toys, time – whatever you can spare to make somebody else's life that little bit happier, and help them believe that there is good in the world.

The good news is that SAGE-AU is looking forward to an even stronger year ahead, and I thank you all for being a part of an active, growing and vibrant guild.

Whatever faith you may hold, and I don't mean operating systems ;), I trust that the coming holiday season will bring happiness to you, your families and your colleagues, and on behalf of the SAGE-AU national executive I wish you all the very best for a happy and prosperous new year.

kindest regards,
Andrew

Happy Holidays

The SAGE-AU Executive wish all SAGE-AU members and their families all the best for the holiday season and a wonderful and productive 2003.

The SAGE-AU Administration office will be closed for the holiday break from 23rd December 2002 to 3rd January 2003 (inclusive).



Please update your records

Our new postal address is: 346/500 Centre Road, Bentleigh Vic 3204

Our office phone is 03 9822 7271 and fax is 03 9822 0260

DATASAFE

Networked backup archiving device



Cybersource/DATASAFE is an entirely new idea in network backup, that guarantees you peace of mind. How does it do this? DATASAFE automatically archives 'snapshots' of your network servers daily. DATASAFE can be installed in minutes and is managed through your web-browser. And unlike tape backups, DATASAFE runs completely unattended, securing your data against the risk of a mislabeled tape or a forgotten backup. Best of all, DATASAFE offers unbeatable purchase value, and by requiring no regular maintenance, very low overall ownership costs.

And when it comes time to restore lost data, DATASAFE makes data retrieval easy -- simply select the files you want from the archive (using your web-browser) and click 'Restore.' You can even select the version and date of each file you want from the archive, going back months or perhaps years.

Specification

DATASAFE is a totally self-contained server appliance supplied as a rack mountable unit. It ships with either 80GB, 160GB or 480GB of online archive storage. DATASAFE uses TCP/IP network protocols, and can operate with standard Microsoft Windows Networking (SMB/CIFS on Windows 95, 98, Me, NT, 2000, XP.) Contact Cybersource for Unix/Linux (NFS) and Apple Macintosh support.

DATASAFE comes with a twelve month return-to-manufacturer hardware warranty. Business and Extended Hours Service Level Agreements are also available. DATASAFE is available from Cybersource or through a national dealer channel. Contact Cybersource for more information.

Pricing

80GB Unit: \$2950 (inclusive of GST; unlimited users, unlimited servers)
Can provide 6-12 months of online daily-backups for a small organisation

160GB Unit: \$3950 (inclusive of GST; unlimited users, unlimited servers)
Can provide 3-6 months of online daily-backups for a medium-sized organisation

480GB Unit: \$P.O.A (inclusive of GST; unlimited users, unlimited servers)
Can provide 1-3 months of online daily-backups for a large organisation

Web: <http://www.cyber.com.au/cyber/product/datasafe/>

Phone: +61 3 9642 5997

Mail: info@cyber.com.au



An Interview with Tim Leatherman (founder of Leatherman Tool Group)* Andrew van der Stock (ajv@greebo.net)

Q. The marketing on your web site suggests that most of your customers are the outdoors type. Why do you think that geeks have taken to your tools as well as they have?

A. I think anyone who wants to save a few steps finds our tools useful. By the way, I'm not a geek in the computer sense (as you can tell from my response to your e-mail, I struggle with even the most elementary uses), but I am a bit of a geek (apron and pocket protector) as a tool designer.

Q. On slashdot a while back, a survey asked how respondents shaved. One of the alternatives was the Leatherman (others included various razor types and a weed whacker). Do you know of any of your customers who has actually shaved using a Leatherman?

A. No. We check the sharpness of the knife blades all the time by seeing if they are sharp enough to shave the hair on our arms, but we've never tested them by seeing if they will shave the hair on our faces. Help me keep my liability premiums low. If it's a choice of the Leatherman or the weed whacker, try the weed whacker!

Q. What's the most unusual use of a Leatherman tool that you've heard of?

A. That's a tough one. We get so many letters. All the "Tool Tales" are true. The other day my Dad was telling me what happened when he took one of our relatives to the hospital. When the doctors and nursing staff found out his name was Leatherman, they crowded around him and started telling stories.

The first doctor had a complaint. He said the tip of his small screwdriver had twisted. My dad told him the tool is guaranteed 25 years (which is true), send it in, and the company will be happy to fix it (which is also true).

The second doctor told about how he was on a mercy mission in Africa and someone's tooth needed pulling. They were days away from a dentist, so this fellow reached in with his Leatherman® tool and extracted the tooth successfully.

The third doctor told about how he was once in the company of someone who got something stuck in his throat. The doctor got his Leatherman® pliers in there and pulled the object out - saved the guy's life.

Q. Are there any Leatherman models designed with the computer user in mind?

A. Not specifically. If any of your readers want to send me a list of the features they would like to have in such a tool, I'd be happy to consider designing a tool specifically with the computer user in mind.

Q. What's your favorite model?

A. Another tough one. Right now I am carrying a Wave and Crunch on my belt and a Micra on my key chain.

Leatherman Tools:
<http://www.leatherman.com>

**This article was originally published in the March 2000 edition of SAGE Advice.*

Want to win a \$220 gift voucher ?

See the Membership Drive information on page 8 for details on how to help increase SAGE-AU's membership base and go into the draw for a gift voucher.

SAGE-AU Merchandise

**Less than 10
in Stock ...
Order Now!**



SAGE-AU Backpacks

Our tenth anniversary backpacks were the hit of the 2002 conference and less than 10 are now available for sale through the SAGE-AU office. A roomy backpack with a front zippered section with space for pens, mobile phones and money, plus a removable shoulder strap, these backpacks were a once only edition and will not be repeated. Purchase yours now or miss out forever! Only \$27.50 (incl GST).

SAGE-AU Jackets

Our new 'letterman' jackets have a 100% wool body in black and bottle green suede sleeves. They are quilted inside with a large inside pocket and our logo is stitched in SAGE-AU green on the left breast. Available in sizes to XXXXL. Only \$220 (incl GST). With next year's conference in Hobart, may we suggest the early purchase of a warm jacket? (Jackets are not kept in stock, and are usually delivered within 6-8 weeks of placement of order.)



SAGE-AU Polo Shirts

The old favourites are still available - polo shirts are now available in navy (L and XL only), black (M-XXL), and bottle green (M-XXL) for \$27.50 (incl GST).

Reproduced with kind permission of user Friendly

USER FRIENDLY by Illiad



www.userfriendly.org

www.sage-au.org.au/merchandise.html

SAGE-AU Mugs

Our new XL mugs are big enough for soup or that extra big hit of caffeine.
Available for \$16.50 ea (incl GST).

We also have less than ten of the old standard size mugs available for a bargain run-out price of \$5.50 - just email Lee (lee@sage-au.org.au) if you would like to take advantage of this offer.



SAGE-AU Stress Mice

Our stress mice are a welcome addition to any overworked system administrator's desk. Advertise SAGE-AU and get rid of your stress at the same time!

At only \$5.50 you could afford two!

SAGE-AU Pens

You'll get one for free if you come to the Annual conference, but if you can't wait until then why not buy one for \$3.30?



**Almost sold
out ... Order
Now!**

SAGE Booklets

Our SAGE booklet stocks are running low and with the exchange rate being what it is we may not be ordering more. See www.sage-au.org.au/merchandise.html to see the titles available and send in your order soon!

Something to say?

Email editor@sage-au.org.au with your article ideas, short stories, book or product reviews or comments and suggestions - next edition closes 10 March 2003.

Please see www.sage-au.org.au/newsletters_advert.html
for the publication schedule for 2003.

membership *Drive*

The SAGE-AU definition of a System Administrator is "Anyone who maintains a computer not solely for their own use". At present we represent only a small proportion of the System Administration community.

More members not only means we have greater exposure within the industry, but with government bodies such as NOIE as well. This translates to greater acceptance of SAGE-AU, further membership discounts and benefits, and industry recognition of your professional guild membership. It also ensures we can keep our membership fees at a low, affordable level (about the lowest for any professional guild, and certainly within the IT industry).

For extra motivation to find new members, we've launched an incentive scheme that will run until the 30th of June, 2003. Basically, for every new member you refer to SAGE-AU you go into the draw for a \$220.00 gift voucher. One winner is drawn from every twenty entries, giving you a 1 in 20 chance of winning!

Just make sure that your referred member puts your name in the box marked "Where did you hear about SAGE-AU?".

Winners will be announced after each 20 entries, and the gift voucher may be redeemed for any SAGE-AU merchandise or with any of our SAGE-AU sponsors or supporters.

Think about it – if each member finds just one new member this year, SAGE-AU will double in size. Remember, it doesn't take much - only you.

More information is available on the SAGE-AU website at <http://lists.sage-au.org.au/memberinfo/memberdrive.html> (for members only).

And the winner is

The first winner in the membership drive incentive scheme was Marco Ostini from the University of Queensland. Marco referred one new member and won a \$220.00 gift voucher which he chose to spend on a new SAGE-AU jacket.

We congratulate Marco and encourage all current members to refer a new member and go into the running to be the next winner.

Bulk Memberships

While it has been a long standing rule that SAGE-AU will never discount memberships, we would like to reward companies who have multiple SAGE-AU members on staff by offering a discount on the entry fee, and offering bulk membership renewals.

For every ten memberships applied for from the one organisation at the one time we will charge only 1 entry fee - ie. each membership would be \$88 (incl GST) and there would be one entry fee of \$22 (incl GST) for each block of ten. Usually each new membership incurs the entry fee.

Therefore if you had 18 members, the cost would be \$88 for each person and two entry fees of \$22. Annual renewals would remain at \$88 each.

We have also arranged for bulk renewals to make your accounts handling easier - ie. instead of 18 people coming to you with individual renewal notices, we will send your accounts department (or nominated member) one bulk renewal for all members.

It is very important to note is that memberships to SAGE-AU are always individual and are not transferable. We offer the above waive of fee/renewal offer to reward you for joining a large group of members and to make your accounting easier, but should someone leave your organisation their membership goes with them - it does not belong to your company.

We would require a membership application completed for each prospective member - they can be found at www.sage-au.org.au/joining.html

And with our current membership drive in place, and a \$220 gift voucher on offer, there has never been a better time to join up new SAGE-AU members.

If you have any queries about bulk memberships (or in fact any question about SAGE-AU) please do not hesitate to contact Lee (lee@sage-au.org.au)

The System Administrator's Guild of Australia thanks our generous Gold Sponsor for their support.



If your company would be interested in information about sponsoring SAGE-AU, please contact Simon Woodhead (secretary@sage-au.org.au)

Regional Groups

Welcome back to the Rockhampton RG ...

October this year saw the rekindling of the Rockhampton regional group of SAGE-AU. It's been quiet for a few years; the group originally started up from the active members located at Central Queensland University in Rockhampton, and slowly grew with regular meetings for about a year until disbanding.

One of the great things about being a SAGE-AU member is the face to face nature and networking atmosphere of the regional meetings. I enjoyed these for some years in Sydney whilst living there and thought upon my return to Rockhampton that the local group meetings could be something worth starting again. And I was right.

There has been very warm interest in this group starting up, Rockhampton now sees itself as a focal point for more Information Technology services in large companies than ever before. Ergon Electricity, Queensland Magnesia and Central Queensland University have IT divisions based in or close to Rockhampton. This has seen a great increase in the numbers of local IT professionals and particularly System Administrators.

Looking forward, we're hoping to make use of some of the University's technology for video conferencing allowing us to hold meetings throughout Central Queensland at the same time. It's been a fun couple of months, and I'm hoping next year will be just as enjoyable.

Andrew Whyte, Rockhampton Meeting Organiser

Want to start a regional group in your area like the Rockhampton group did? There is no reason why regional groups have to meet only in the state capitals - if you know five or more system administrators in your area and would like to start a local regional group, contact sage-au-exec@sage-au.org.au to see if a new SAGE-AU group is possible.

NSW Regional Group 2002 Report ...

In 2002 the Sydney chapter of SAGE-AU had trouble finding speakers for the regular meetings. That being said the biggest attendance we had was for the April "Current SysAdmin Job Market" discussion which didn't have a speaker. There was a quite lively discussion of how to keep skills up to date, whose responsibility it is to keep skills current, what employers look for, how the market has changed since the dot.com collapse and what new skills SysAdmins need if they're going to start contracting. There were unfortunately some horror stories of people finding it difficult to find even short term employment. Fortunately two people were able to find some work via other members at the talk - a different kind of networking to what most of us do during the day.

Some other meeting topics throughout 2002 were -

- "Don't get taxed to the rafters" - Tax advice
- a site visit to Compaq's (now HP's) new Enterprise Storage Centre in Rhodes, and
- a wrap up of the 2002 SAGE-AU Conference in Melbourne.

In 2003 we're hoping to move from the current premises at St Leonards (many thanks to Cortex for use of their premises - their kindness was greatly appreciated) to new premises in the Sydney CBD. More details of this will be announced soon.

If you enjoy the benefits of SAGE-AU then perhaps you may like to contribute via giving a talk. We all have a lot of things in common but maybe you've managed to solve a problem that someone else has struggled with and that they could learn from. If you'd like to give a talk the NSW Exec would love to hear from you.

David Herd, NSW Executive

Full lists of Chapter executive committee members, meeting schedules and up to date Chapter information can be found at <http://www.sage-au.org.au/regional.html>

Victorian Chapter

The Victorian group currently meets on the second Tuesday of the month at 7:00pm at:

VTR Consulting
Roseneath Place, South Melbourne

President

Chris Williams
christopher.williams@member.sage-au.org.au

Vice President

John Stern
john.stern@member.sage-au.org.au

Treasurer

Ben White
ben.white@member.sage-au.org.au

The group mailing list is sage-vic@sage-au.org.au

Queensland Chapter

The Queensland group currently meets on the second Thursday of the month at 7.00pm at:

Room 102
Frank White Building (No. 43)
Cooper Road
University of Queensland, St Lucia

President

Mark Suter
mark.suter@member.sage-au.org.au

Secretary

Jamie Gillespie
jamie.gillespie@member.sage-au.org.au

Treasurer

James Lever
james.lever@member.sage-au.org.au

The group mailing list is sage-qld@sage-au.org.au

There is also a **Rockhampton** group - see
www.sage-au.org.au/rgqld_rockhampton.html

South Australian Chapter

The South Australian group currently meets on the last Wednesday of the month at 6.30pm at:

Vectra Corporation
38 Sir Donald Bradman Drive, Mile End

President

Phil Kernick
phil.kernick@member.sage-au.org.au

Secretary

Monica Ciric
monica.ciric@member.sage-au.org.au

Treasurer

Grant Ward
grant.ward@member.sage-au.org.au

The group mailing list is sage-sa@sage-au.org.au

New South Wales Chapter

The New South Wales group currently meets on the second Tuesday of the month at 6.30pm at:

Cortex eBusiness
Level 6/154 Pacific Highway, St Leonards

President

Zebee Johnstone
zebee.johnstone@member.sage-au.org.au

Vice President

Neil Glennon
neil.glennon@member.sage-au.org.au

Treasurer

David Herd
david.herd@member.sage-au.org.au

The group mailing list is sage-nsw@sage-au.org.au

Australian Capital Territory Chapter

The ACT group currently meets on the last Tuesday of the month (except December) at 6.00pm at:

University House
Cnr Balmain Cres & Liversidge St, Acton

Interim President

Roy Meuronen
roy.meuronen@member.sage-au.org.au

Interim Secretary/Treasurer

Steve Jenkin
steve.jenkin@member.sage-au.org.au

The group mailing list is sage-act@sage-au.org.au

Tasmanian Chapter

The Tasmanian group currently meets on the third Monday of the month at a different location depending on the event being held (check <http://www.sage-au.org.au/rg/tas> for info).

President

Chris Fishwick
chris.fishwick@member.sage-au.org.au

Secretary

Andreas Modinger
andreas.modinger@member.sage-au.org.au

Treasurer

Anthony Vialle
anthony.vialle@member.sage-au.org.au

The group mailing list is sage-tas@sage-au.org.au

West Australian Chapter

The West Australian group currently meets on the first Wednesday of the month at 6.30pm at:

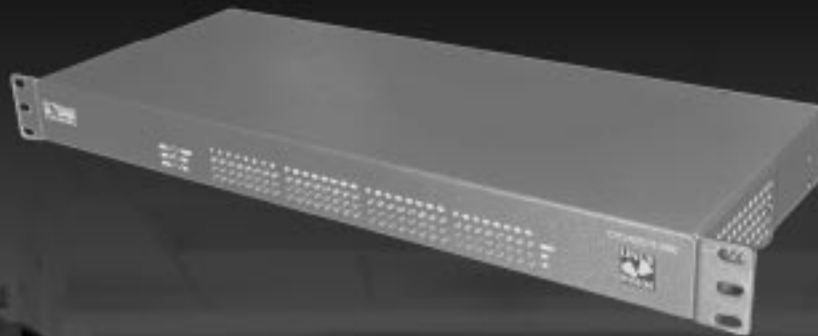
Moon & Sixpence British Pub
300 Murray Street, Perth

Organiser

Tom Hallam
tom.hallam@member.sage-au.org.au

The group mailing list is sage-wa@sage-au.org.au

Guess what Yahoo!® uses to manage their servers?



"The Cyclades-TS Series of Console Access Servers provides the highest port density and security at a very competitive price. By using Linux as the embedded OS, it offers the flexibility required to manage our dynamic environment. The Cyclades-TS is a key element to help us keep our servers up and running." - **Pete Kumler**, *Manager of Site Operations, Yahoo! Inc.*

NEW! Device Server
Cyclades-TS100 • 1 port



Cyclades-TS Series

Console Access Server

- 1/4/8/16/32/48 RS-232 ports on 1U of rack space
- IP Filtering, RADIUS, and Secure Shell (SSHv2)
- Linux, FreeBSD, Sun, HP, and IBM compatible
- No unintentional breaks (Sun)
- Off-line data buffering



LINUX
INSIDE

Request for your FREE CAS booklet at www.cyclades.com



www.au.cyclades.com

T: +61 7 3279 4320

F: +61 7 3279 4393

australia@cyclades.com

